



PROVEN PERFORMER

On-Premises Heat Pump Tumble Dryers SHP250, SHP285, SHP345

Features

- Heat pump
- Standard stainless steel drum with large diameter
- Easy-to-use microprocessor (Easy)
- Combination of radial and axial airflow concept:
 - Maximal heat transfer
 - Low energy consumption
 - Short drying time
- Large door opening for easy loading and unloading
- Self cleaning lint screen

Options

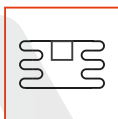
- Stainless steel front
- Reversing drum
- Full control programmer (Flex)
- Residual moisture control:
 - Safe drying of delicate linen
 - Humidity detection in %
 - Ideal in combination with wet cleaning
 - Ideal for dry cleaners, fire departments
 - Available on Easy and Flex Control
- Coin operated version
- Automatic rinsing system for heat exchangers
- Special plinth for easy service access



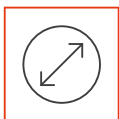
ENERGY EFFICIENT



STANDARD STAINLESS STEEL DRUM



HEAT PUMP



LARGE DOOR OPENING



Flex control panel



SHP250

	SHP250	SHP285	SHP345
Drum			
Capacity 20:1	12.50	14.25	17.2
Capacity 25:1	9.80	11.44	13.60
Volume litres	250	285	345
Diameter mm	760	760	760
Drying average g/min	118.03	129.48	130.29
Motor			
Fan kW/h	0.3	0.3	0.3
Drive kW/h	0.25	0.25	0.25
Programmer			
Type of control	Easy / Flex Control	Easy / Flex Control	Easy / Flex Control
Cabinet			
Stainless steel/white	White	White	White
Drum	Stainless steel	Stainless steel	Stainless steel
Dryer door Hinge	Zamak	Zamak	Zamak
Heating			
Gas consumption (megajoules)	n/a	n/a	n/a
Steam models - 100 PSI -BTU/hr	n/a	n/a	n/a
Electric kWh	3.2 - 3.6	3.2 - 3.6	3.2 - 3.6
Connection			
Electrical V /Hz			
Air inlet mm	n/a	n/a	n/a
Air outlet mm	n/a	n/a	n/a
Steam inlet (BSP) mm	n/a	n/a	n/a
Steam Outlet (BSP) mm	n/a	n/a	n/a
Gas inlet mm	n/a	n/a	n/a
Gas outlet mm	n/a	n/a	n/a
Drain mm	40	40	40
Operation			
Drying cycles			
Radial drying system yes or no	Radial + Axial	Radial + Axial	Radial + Axial
Power			
Electrical requirements	3×380-415V +N 50-60Hz	3×380-415V +N 50-60Hz	3×380-415V +N 50-60Hz
With reversing (where available)	3×380-415V +N 50-60Hz	3×380-415V +N 50-60Hz	3×380-415V +N 50-60Hz
Breaker size A	16	16	16
Full load Amps A	11	11	11
Motor horsepower kW	0.34	0.34	0.34
Transport data			
Gross weight kg	385	400	400
Net weight kg	350	360	375
Dimensions H×W×D mm	1680×795×1525	1680×795×1615	1735×795×1735
Packaging dimension H×W×D mm	1785×855×1540	1785×855×1635	1785×855×1750
Volume m ³	2.4	2.5	2.7
Agency approvals			
Australian gas approval	n/a	n/a	n/a



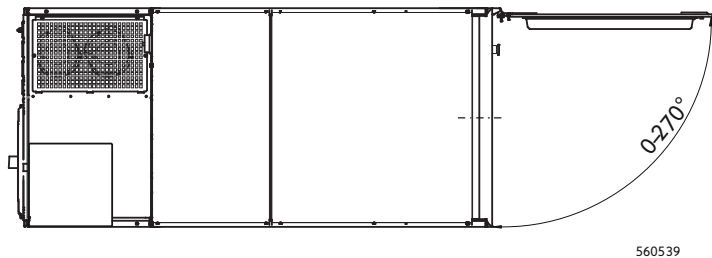
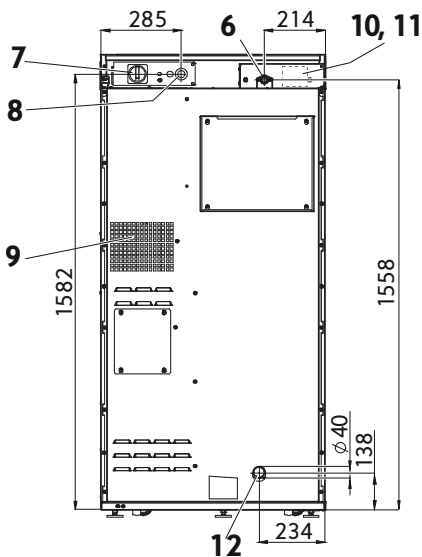
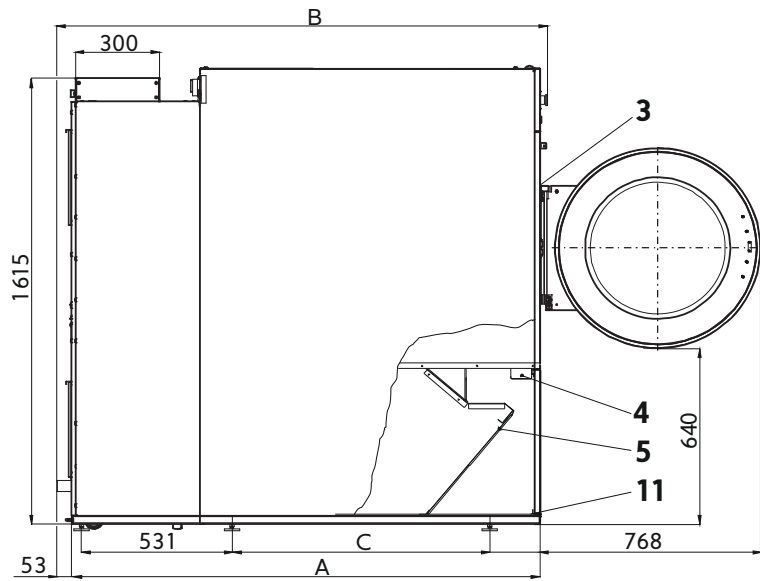
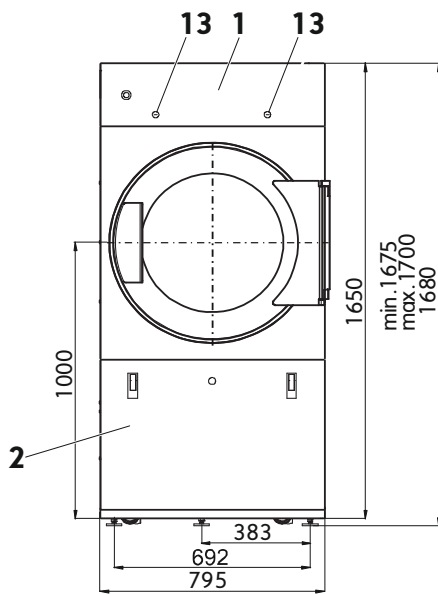
Dimensions

Dryer Capacity	A	B	C
SH250	1440	1525	762
SH285	1530	1615	852
SH345	1650	1735	972

All measurements in mm.

SHP250/SHP285/SHP345

- 1 Control panel
- 2 Lint screen cover
- 3 Door lock microswitch
- 4 Lint cover microswitch
- 5 Lint screen
- 6 Water inlet for rinsing system of the heat pump exchanger - on request
- 7 Main switch
- 8 Main power supply
- 9 Suction
- 10 Serial plate
- 11 Serial number of the machine
- 12 Condensate drain
- 13 Lock of the control panel:
SHP250 11 kg, SHP285 13 kg,
SHP345 16 kg with heat pump





Speed Queen Equipment Sales.
26 Theobald Street, Thornbury, Vic 3071
Ph: (03) 9495 1300
Fax: (03) 9495 1600
W: www.speedqueensales.com.au
E: sales@speedqueensales.com.au
Servicing Victoria, Tasmania.

The content of this brochure (including, without limitation, any analysis forming part of it) is general information, for personal use only and should not be relied upon for investment purposes. This brochure provides information based on subjective assumptions and does not provide actual or expected returns, which may in practice be lower than those stated in the brochure. You should obtain independent financial advice prior to making any decision to invest in, or with, Alliance Laundry Systems LLC. To the extent permitted by law, we do not accept any liability (whether in contract, tort, negligence or otherwise and howsoever arising), nor owe any duty of care to you, for any consequences of your acting (or refraining from acting) in reliance on the contents of this brochure. If you enter into a contract with us, we will require that you irrevocably waive your rights to bring a claim against us for acting in reliance on the content of this brochure. E&OE

